

IN THE BLACK

|Exploration, Extraction and Construction Opportunities for Underwater Technology|

27 June 2019
Porto, Portugal

Auditorium
Vítor Santos

TECUSERA um laboratório no oceano atlântico

eit RawMaterials
Connecting masters

IN THE BLACK
EXPLORATION, EXTRACTION
AND CONSTRUCTION
OPPORTUNITIES FOR
UNDERWATER TECHNOLOGY

Chairman **Stef Kapusniak**

INESCTEC
www.inesctec.pt

EIT RawMaterials is supported by the EIT,
a body of the European Union
www.eitrawmaterials.eu

MORE INFORMATION – MEETING

GETTING TO ISEP

ISEP is located in the main university area of Porto, 10 minutes away from the city centre by subway. Easily accessible by public transportation, the campus is just across the IPO subway station (yellow) line and is also served by the 300, 301, 603, 803 buses. If you are driving, use the map below for directions. The entrance to our campus parking is located on Rua de S. Tomé.

- By metro

The easiest way to get from Porto Airport to the city center is to take the metro. Line E (Violet) connects Airport Station to "Estádio do Dragão" Station, and, naturally, to all metro's network (Trindade station). The access to the Station from the interior of the Airport is extremely simple and practical, being fully signalled.

- By bus

[STCP](#) operates bus lines between Francisco Sá Carneiro Airport and different parts of the city. [AeroBus](#) is a relatively fast connection between the Airport and downtown Porto, including the city's leading Hotels, every 30 minutes, from 07h45m till 19h15m.

Buses 601, 602, 604 and 3M serve the airport.

- By taxi

Taxis are available 24 hours a day from outside Arrivals at the airport.

- By air

Several airlines offer direct service to [Francisco Sá Carneiro International Airport](#), located at about **20 Km** from the City Centre.

There, you can take the metro or the bus to go to the city center.

ACCOMMODATION

IN THE BLACK workshop will take place in the ISEP Campus. [ISEP is located in the University area](#) in the north of the city, and it is served by the [Metro line D](#) (Yellow Line, "IPO" or "Polo Universitário" stations) with a direct connection (15 minutes) to the city center (downtown).

If you have any questions about hotels please contact Cláudia Almeida – CRAS – (claudia.almeida@inesctec.pt).

Campus Area Hotels

There are two hotels in the campus area: [Hotel IBIS São João](#) is a standard Ibis at 5 minute walking distance, [Hotel Eurostars Oporto](#) is an higher standard (larger rooms, etc.) at 10 minutes walking distance.

Recommended Hotels

Campus area with 10 minute walking distance

[Hotel IBIS São João](#) is very good for an IBIS. The WiFi is free, with traffic cap. The rate for a double room for 1 or 2 persons is around 50 EUR/night (all taxes and breakfast included).

[Hotel Eurostars Oporto](#) is a four star hotel and is not expensive. The rate for a single room is 59 EUR/night and 65 EUR/night for a double room (all taxes and breakfast included). The WiFi is free everywhere.

Campus area with 25 minute walking distance

[Axis Porto Business & Spa Hotel](#) is deal for those who choose to stay in comfort. The Hotel is equipped with LCD's with several TV channels and Video On Demand , safe, hair dryer, minibar and balcony. The Hotel also provides free access to wireless internet in public areas and rooms. The rate room for 1 or 2 persons ranges between 90 EUR/night - 120 EUR/night (all taxes and breakfast included).

Downtown with 15 minute access to venue, via Metro

[Hotel B&B Porto Centro](#) is a inexpensive alternative with a very local touch in the heart of the city. The rate for a single room is 46 EUR/night (all taxes and breakfast included). WiFi is free.

[Quality Inn Praça da Batalha - Porto](#) is a standard 3 star hotel. Rates are 53 EUR/night for a single room and 60 EUR/night for a double (all taxes and breakfast included). WiFi is free.

[Hotel Teatro](#) features 4-star contemporary accommodations in the heart of Porto. Each room offers an individual and modern design with earthy tones, however the dark design may not be everybody's cup of tea. Rates are 86 EUR/night for a single room and 96 EUR/night for a double room (all taxes and breakfast included). The WiFi is free.

[Ibis Porto Centro](#) is a standard downtown Ibis. The WiFi is free, with traffic cap. Rates are around 44EUR/night for a single room and 50 EUR/night for a double room (all taxes and breakfast included). The WiFi is free.

[Grande Hotel Porto](#) is a charming 3-star hotel which maintains a dramatic, nineteenth-century, fin de siècle charm. WiFi is free. It is also well located from a transportation perspective. Customers interested in booking should access www.grandehotelporto.com / reservations and then make the reservation online.

[Hotel Porto Trindade](#) is a 4-star hotel located right in the traditional centre of Porto, with easy access to the main tourist attractions of the city and just across the street from Metro station of Trindade. WiFi is Free. Rates are 69 EUR/night for a single room, 77 EUR/night for a double/twin room and 97 EUR/night for a triple room (all taxes and breakfast included).

Low cost

The [Star Inn](#) is a low-cost design hotel with single rooms starting below 30 EUR per night, all taxes included, no breakfast, 1 person per room. The hotel is located at a walking distance from the conference location (25 minutes).

Five star hotels

The [Sheraton Porto Hotel & Spa](#) features spacious rooms and a modern spa. The design guest rooms are decorated with a mix of wood, steel and glass furnishings. The campus is at a 5 minute Taxi drive from the hotel. The rates are 125eur/night for a single room and 140eur/night for a double room, all taxes and breakfast included.

[Porto Palácio](#) combines executive-conscious and luxury rooms with top-notch spa and gastronomic treats. The campus is at a 5 minute Taxi drive from the hotel. The rates are 100 EUR/night for an executive single room and 150 EUR/night for a deluxe single room; 120 EUR/night for an executive double room and 170 EUR/night for a deluxe double room, all taxes and breakfast included.

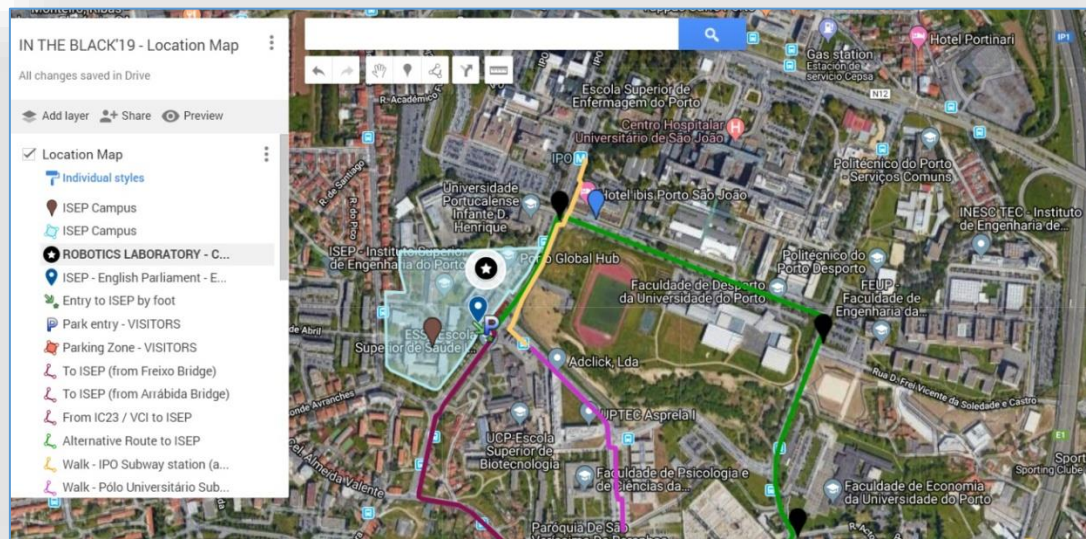
[Intercontinental Porto Palácio das Cardosas](#). Set in a renovated 18th-century palace, this 5-star hotel offers spacious rooms with views of Porto's historic center. You can reach the campus by Metro (15 minute trip). Rates are 170 EUR/night for a single or double deluxe room.

The [Yeatman](#) is a design luxury hotel in Gaia with focus on the port wine traditions of the city inviting the guest in the wine spa concept and a relaxing environment. The campus is 15 to 20 minutes by Taxi. Rates are around 210 EUR/night for single room, 230 EUR/night for a double room, with all taxes inclusive and free access to the swimming pools and gymnasium.

Other Hotels

You can find more hotels at [TripAdvisor](https://www.tripadvisor.com) and [Booking.com](https://www.booking.com).

MAP



https://drive.google.com/open?id=1e6KMsMR5rKZoHLdafKOL_gCNbHjq9jdY&usp=sharing

Other info:

<https://www.isep.ipp.pt/ISEP/Location>